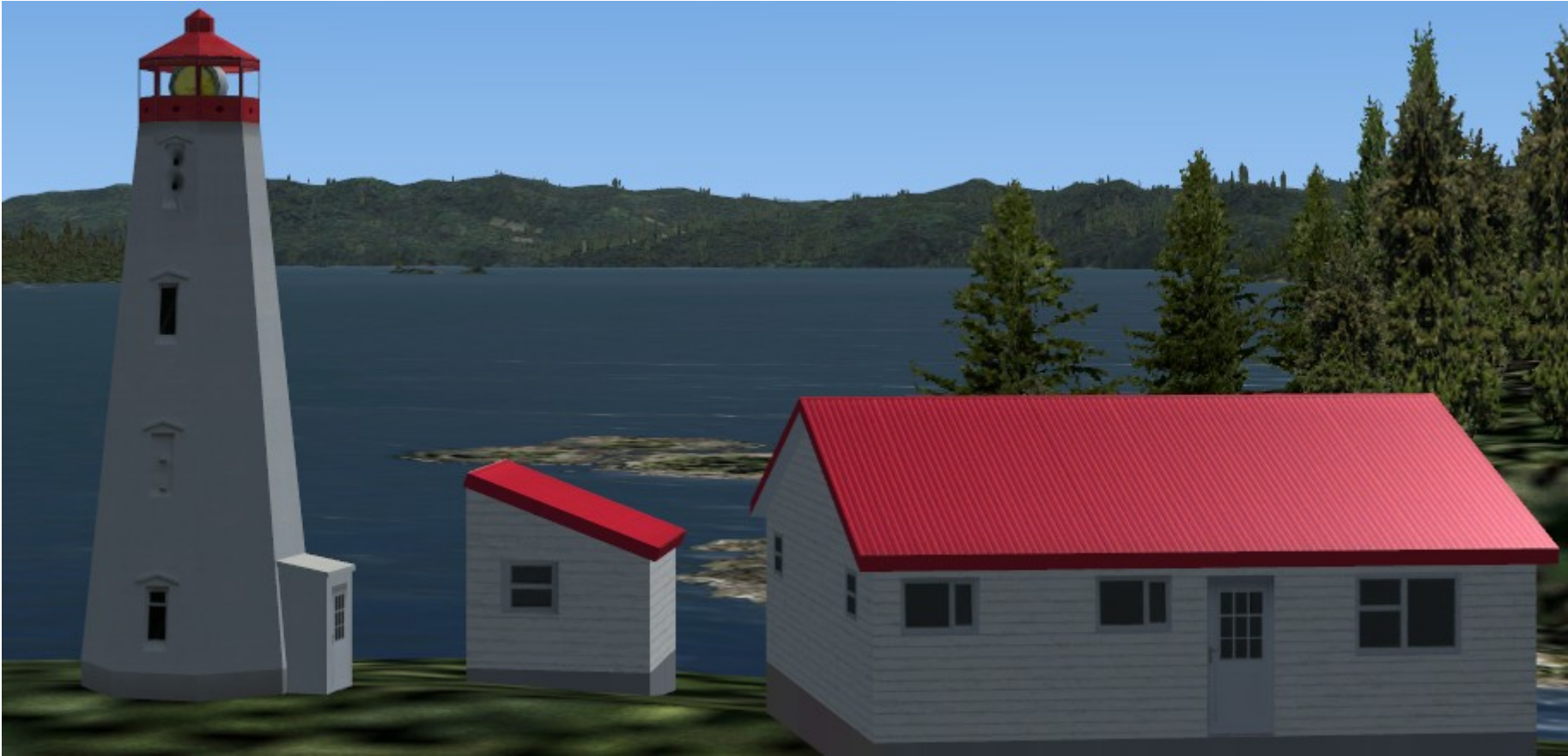


# BC PNW Lighthouses



## Introduction

I include for your enjoyment a selection of eighteen lighthouses from the Pacific Northwest area of British Columbia. The criteria for the selection of lighthouses was that they have a helipad and were staffed and operated by the Canadian Coast Guard. All these lightstations are based on their real world counterparts, no fictitious locations are included here.

The design philosophy of these lightstations was, from the outset of this project, keep it frame rate friendly. The simplicity of the structures and their remote nature help to ensure that frame rates are kept high even on fairly modest powered computers.

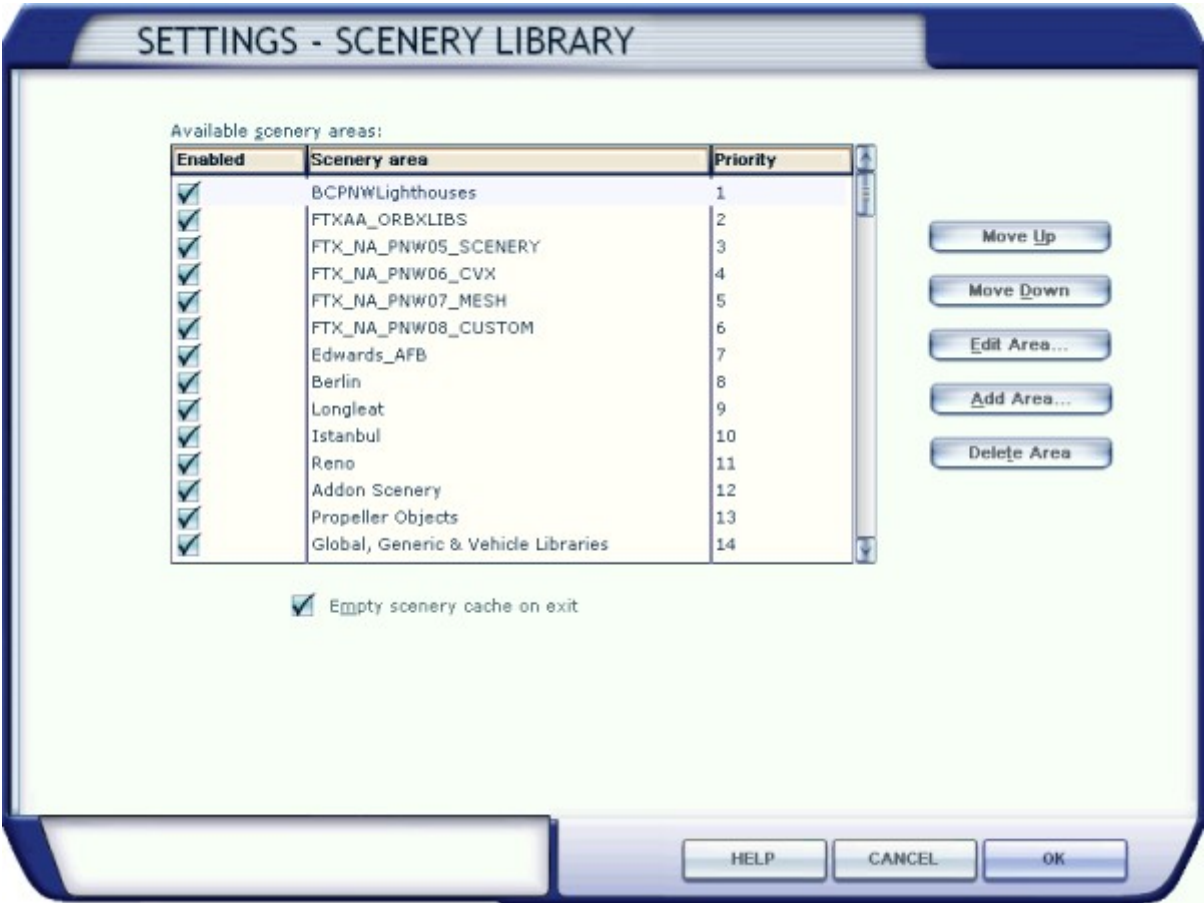
Although all the lighthouses I have included in this package have a helipad, this scenery will also benefit bush pilots flying coastal British Columbia; lighthouses make great VFR location indicators!

Regards, Mike Mann

## Installation

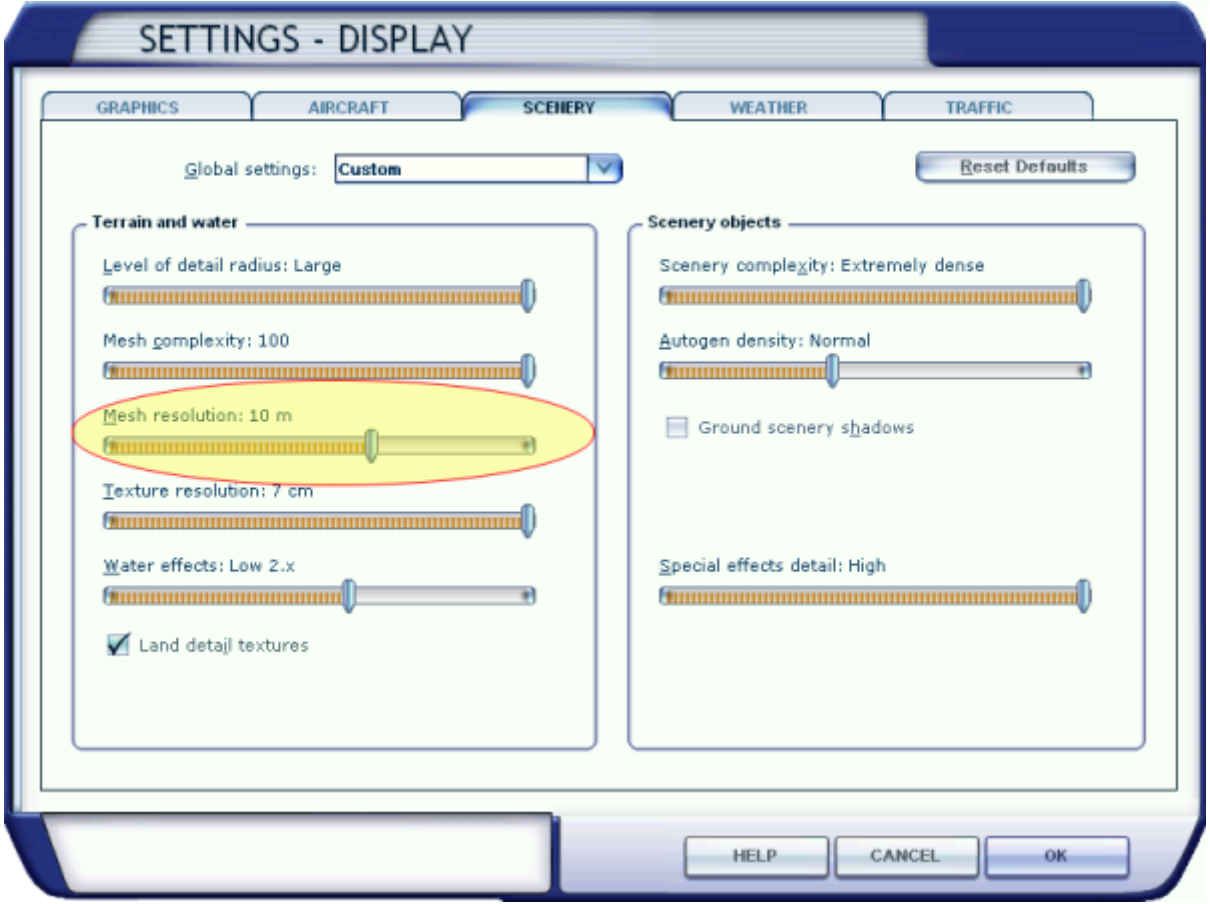
This package was designed to be used with Orbx's FTX NA Blue Pacific Northwest (PNW). To install the scenery:

1. After unzipping the **BCPNWLighthouses.zip** file, copy the **BCPNWLighthouses** folder into your **Addon Scenery** folder:  
\\Program Files\\Microsoft Flight Simulator X\\Addon Scenery
2. Add **BCPNWLighthouses** through your scenery FSX settings and make sure it is above all the Orbx PNW entries (see photo).



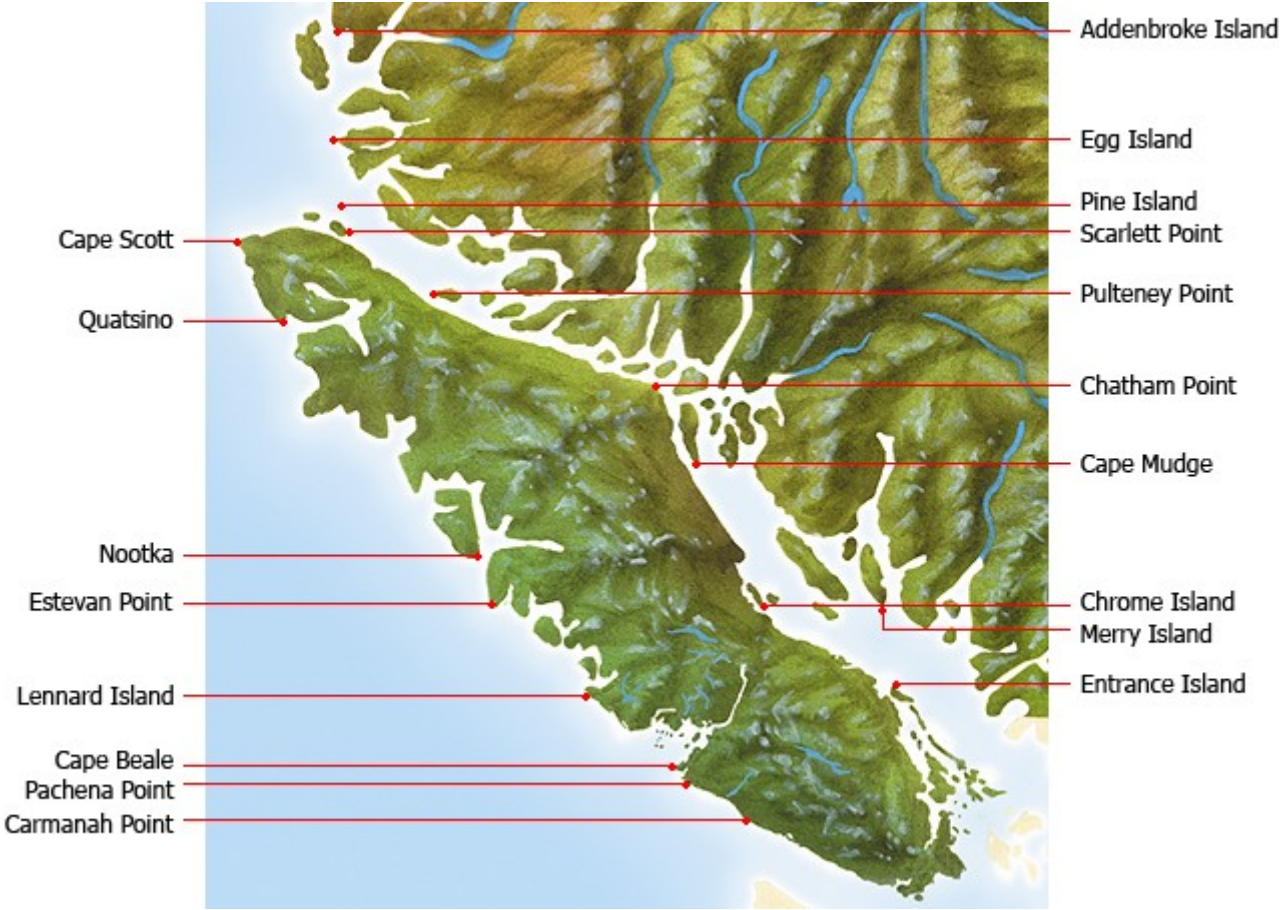
3. To use the flights just copy them over from the **Flights** folder into your **Flight Simulator X Files** folder:  
\\My Documents\\Flight Simulator X Files

4. This scenery was designed for a mesh resolution of 10 m. Set your FSX – Settings – Display – Scenery – Mesh resolution: 10 (see photo).



## Lighthouse Locations

The map below shows the approximate location of all eighteen lighthouses included in this package.



## Flights

I have created a flight for each lighthouse which starts you at the helipad at that location, using the default Bell 206B JetRanger. Please feel free to alter these flights to utilize the helicopter of your choice, with the type of weather and time of day/season to suit yourself. When loading a flight, check the Load Flight Description, I have described the approximate location for each of the lighthouses.

## Support

If you have any problems, suggestions or just want to express an opinion about **BC PNW Lighthouses** you can E-mail me (Mike Mann) at: [twocatzmann@hotmail.com](mailto:twocatzmann@hotmail.com)

## Acknowledgements

Thanks to Arno Gerretsen for Library Creator XML and ModelConverterX, Jon Masterson for Airport Design Editor, Martin Wright for DTXBmp and Richard Ludowise for TcalcX.

## End User License Agreement (EULA)

Although this package is freeware you are only granted a right to install and use **BC PNW Lighthouses** on your computer system(s) solely for your own personal enjoyment.

You may not:

- upload **BC PNW Lighthouses**, whether or not modified, in whole or in part, to any file distribution site
- upload any of the custom objects or include said custom objects in any project you intend to upload

All parts of **BC PNW Lighthouses** are © 2011 – Mike Mann